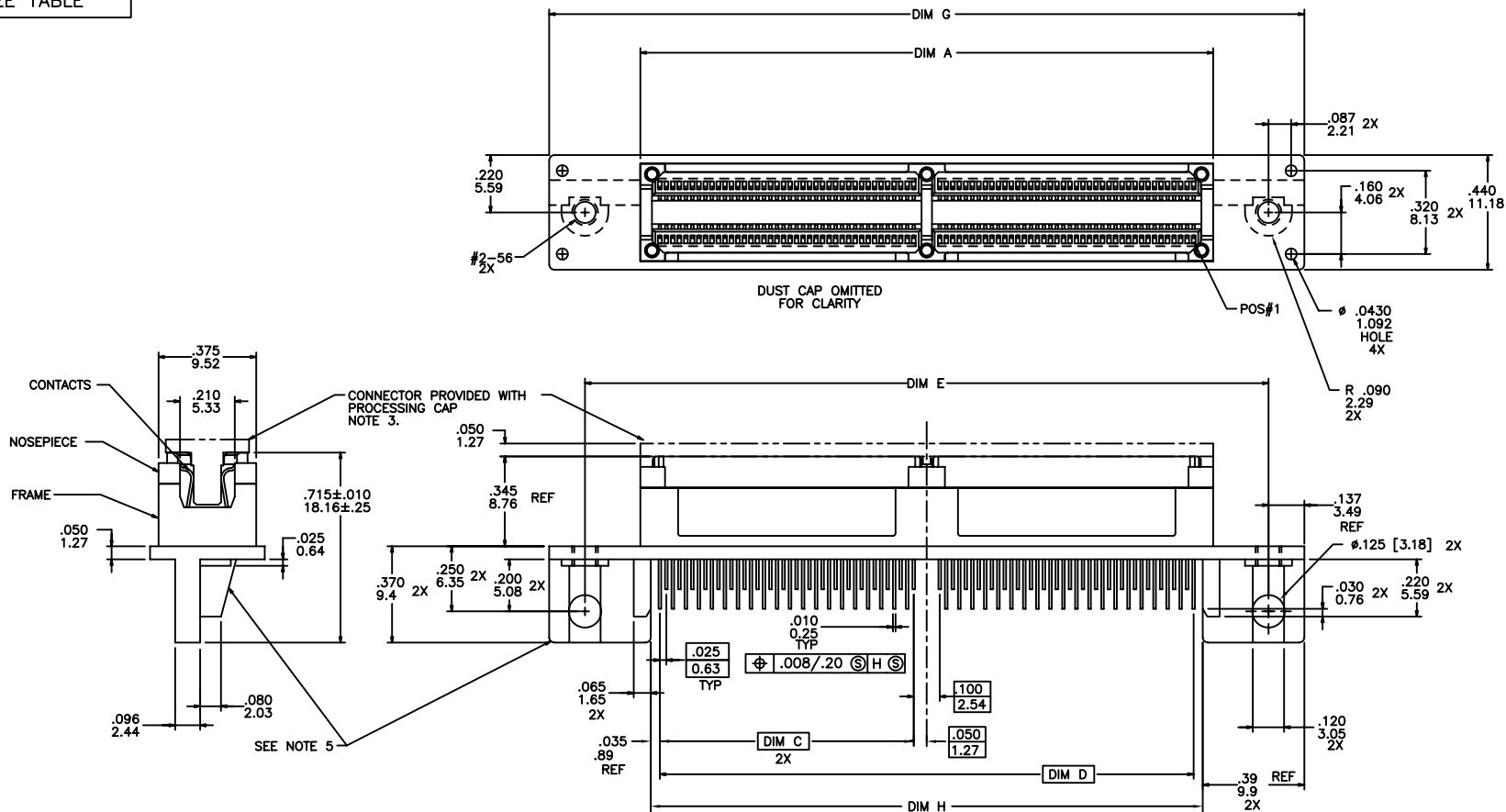
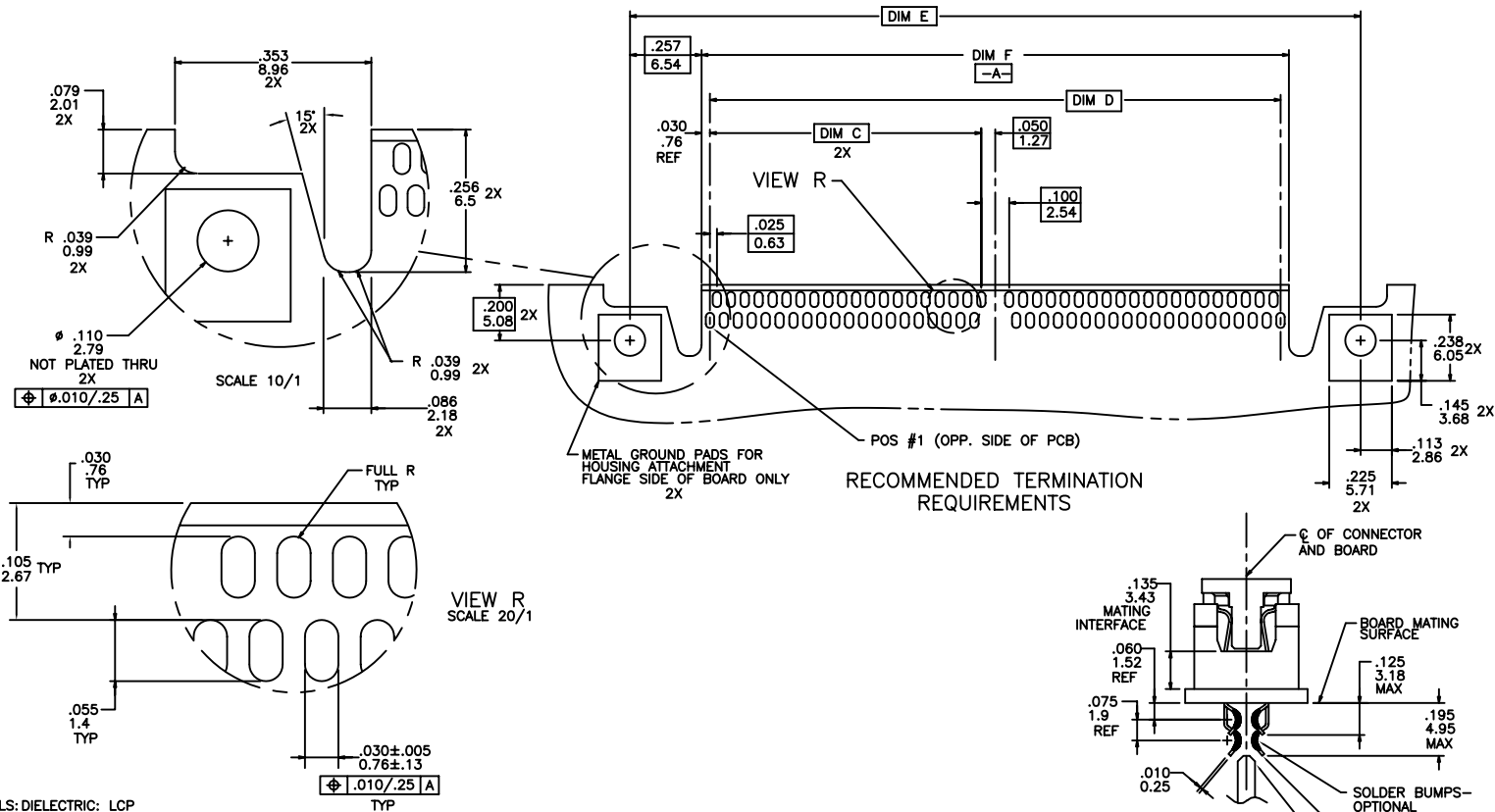


PRODUCT NUMBER
SEE TABLE



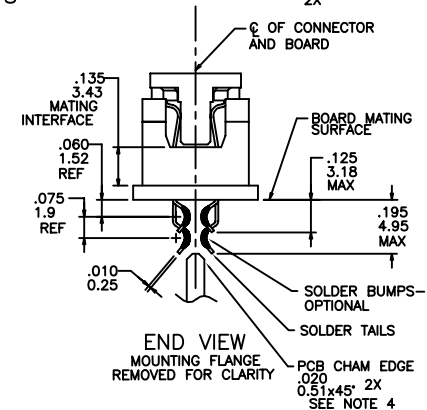
mat'l. code				surface	tolerance	projection	product family
NOTE 1				ISO 1802	ISO 406 ISO 1101	ISO 1101	MICROPAX
ltr	ecr no	dr	date	tolerances unless otherwise specified		INCH/MM	title
F	v60661	LSS	4/15/96	angles	linear	XX±.01/XX±0.3	.025M STRADDLE RECEPT. DOUBLE MODULE
G	v61446	EPK	10/10/96			XXX±.005/XXX±0.13	
H	v70193	RGD	2/19/97	0°±2°		XXXX±.0020/XXXX±0.051	scale 1:1
J	v12115	MEM	10/09/01	dr	M. CORNMANN	5/09/94	94662
K	M06-0279	MNR	7/24/06	engr	M. HAHN	5/09/94	
L	M07-0096	AGS	2/08/07	chr	M. HAHN	5/09/94	A3
M	M08-0251	MHT	9/08/08	appd	M. HAHN	5/09/94	
sheet	revision	M	M	M			type Product Customer Drawing
index	sheet	1	2	3			

PRODUCT NO. NOTE 6	NO. OF CONTACTS	DIM A	DIM C	DIM D	DIM E	DIM F	DIM G	DIM H	BOARD THICKNESS	SOLDERBUMP	CONTACT PLATING NOTE 2	PROCESSING CAP	NOTE 5
94662-131	200	2.700/68.58	1.225/31.12	2.550/64.77	3.125/79.38	2.610/66.29	3.400/86.36	2.620/66.55	.062/1.58	YES	30 GXT	ORDER SEPARATELY	NO
94662-134									.074/1.88				NO
94662-135									.088/2.24				YES



NOTES:

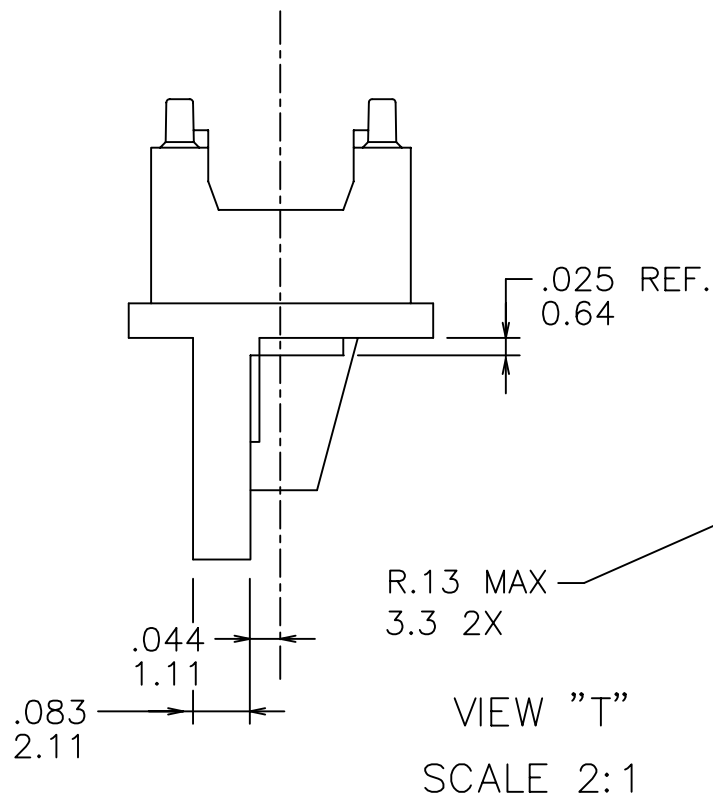
- MATERIALS: DIELECTRIC: LCP
CONTACTS: Be Cu
FRAME: ZINC ALLOY #3
- PLATING:
SOLDER TAILS: 150u"/3.81u Sn Pb
FRAME: 100u"/2.54u Ni
CONTACT:
30u"/.76um GXT OVER 50u"/1.27um Ni
LF OPTION
SOLDER TAILS: 150u"/3.81u Sn
FRAME: 100u"/2.54u Ni
CONTACT:
30u"/.76um GXT OVER 50u"/1.27um Ni
- DO NOT REMOVE PROCESSING CAP UNTIL SOLDERING IS COMPLETED. CAP WILL PREVENT POTENTIAL NOSE PIECE BOW DURING HIGH TEMP. SOLDERING PROCESS.
- PCB CHAMFER FOR -.135 TO BE .026±.010/0.66±0.25 X 33°.
- MOUNTING FLANGES FOR -.135 ARE MACHINED TO ACCOMMODATE .088" THK. BOARD & MAINTAIN CENTERLINE OF CONNECTOR & BOARD ON THE SAME PLANE. SEE VIEW "T" FOR FLANGE DIMENSIONS. PLATING TO BE PERFORMED AFTER MACHING
- ADD "LF" SUFFIX AT THE END OF PART NUMBER FOR LEAD FREE OPTION.
- IF PART NO "LF" THIS PRODUCT MEETS EUROPEAN UNION DIRECTIVES AND OTHER COUNTRY REGULATION AS DESCRIBED IN GS-22-008.
- THE HOUSING WILL WITHSTAND EXPOSURE TO 260°C PEAK TEMPERATURE FOR 20 SECONDS IN A CONVECTION, INFRA-RED OR VAPOR PHASE REFLOW OVEN. SEE APPLICATION NOTES/PROCEDURES IF THEY ARE AVAILABLE.
- SEE BUS-20-084 (SET-UP APPLICATION SPEC.) FOR REFERENCE.



mat'l. code	surface	tolerance	projection	product family
NOTE 1	ISO 1802	ISO 406 ISO 1101		MICROPAX
ltr	ecr no	dr	date	title
M				.025M STRADDLE RECEPT. DOUBLE MODULE
	angles	linear		dwg no
	0°±2'			94662
	dr	M. CORNMAN	5/09/94	sheet 2 of 3
	engr	M. HAHN	5/09/94	size
	chr	M. HAHN	5/09/94	A3
	appd	M. HAHN	5/09/94	type
sheet	revision			Product Customer Drawing
index	sheet			

PRODUCT NUMBER

SEE TABLE



VIEW "T"
SCALE 2:1

mat'l. code				surface		tolerance	projection	product family	
NOTE 1				ISO 1302		ISO 406 ISO 1101		MICROPAX	
ltr	ecr no	dr	date	tolerances unless otherwise specified			INCH/MM	title	
M				angles	linear	.XX±.01/.XX±0.3 .XXX±.005/.XX±0.13 .XXX±.0020/.XXX±0.051		.025M STRADDLE RECEPT. DOUBLE MODULE	
				0°±2°			scale 1:1		
				dr	M. CORNMANN	5/09/94	FCI	dwg no	
				engr	M. HAHN	5/09/94		94662	
				chr	M. HAHN	5/09/94		sheet 3 of 3 size	
				appd	M. HAHN	5/09/94	type		Product Customer Drawing
sheet index	revision sheet								