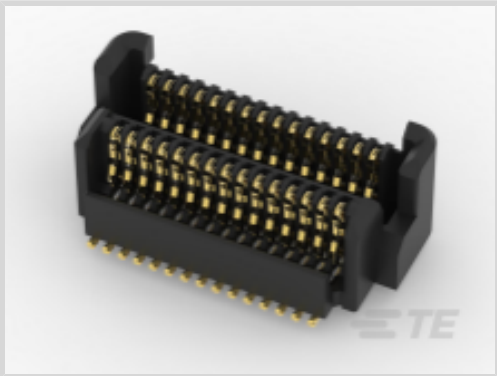




Connectors > PCB Connectors > PCB Headers & Receptacles



PCB Connector Assembly Type: **PCB Mount Hermaphroditic Connector**

PCB Mount Orientation: **Vertical**

Connector System: **Board-to-Board**

Number of Positions: **30**

Number of Rows: **2**

Features

Product Type Features

PCB Connector Assembly Type	PCB Mount Hermaphroditic Connector
Connector System	Board-to-Board
Sealable	No
Connector & Contact Terminates To	Printed Circuit Board

Configuration Features

PCB Mount Orientation	Vertical
Number of Positions	30
Number of Rows	2
Board-to-Board Configuration	Parallel

Body Features

Primary Product Color	Black
-----------------------	-------

Contact Features

Contact Mating Area Plating Material	Gold
	15 µin
Contact Type	Hermaphroditic
Contact Current Rating (Max)	.5 A

Termination Features

Rectangular Termination Post & Tail Thickness	.15 mm[.005 in]
---	-----------------

Rectangular Termination Post & Tail Width	.2 mm[.008 in]
Termination Method to Printed Circuit Board	Surface Mount

Mechanical Attachment

PCB Mount Alignment Type	Locating Posts
PCB Mount Retention Type	Solder Peg
Mating Alignment	With
Mating Alignment Type	Polarization
PCB Mount Retention	Without
PCB Mount Alignment	With
Connector Mounting Type	Board Mount

Housing Features

Centerline (Pitch)	.5 mm[.02 in]
Housing Material	Thermoplastic

Dimensions

Stack Height	4 mm[.157 in]
--------------	---------------

Usage Conditions

Operating Temperature Range	-40 – 125 °C[-40 – 257 °F]
-----------------------------	----------------------------

Operation/Application

Assembly Process Feature	Pick and Place Cover
Circuit Application	Signal

Industry Standards

UL Flammability Rating	UL 94V-0
------------------------	----------

Packaging Features

Packaging Method	Tape & Reel
------------------	-------------

Product Compliance

For compliance documentation, visit the product page on TE.com>

EU RoHS Directive 2011/65/EU	Compliant
EU ELV Directive 2000/53/EC	Compliant
China RoHS 2 Directive MIIT Order No 32, 2016	No Restricted Materials Above Threshold
EU REACH Regulation (EC) No. 1907/2006	Current ECHA Candidate List: JAN 2024 (240)



Candidate List Declared Against: JAN 2024 (240)
Does not contain REACH SVHC

Halogen Content	Low Halogen - Br, Cl, F, I < 900 ppm per homogenous material. Also BFR/CFR/PVC Free
-----------------	---

Solder Process Capability	Reflow solder capable to 260°C
---------------------------	--------------------------------

Product Compliance Disclaimer

This information is provided based on reasonable inquiry of our suppliers and represents our current actual knowledge based on the information they provided. This information is subject to change. The part numbers that TE has identified as EU RoHS compliant have a maximum concentration of 0.1% by weight in homogenous materials for lead, hexavalent chromium, mercury, PBB, PBDE, DBP, BBP, DEHP, DIBP, and 0.01% for cadmium, or qualify for an exemption to these limits as defined in the Annexes of Directive 2011/65/EU (RoHS2). Finished electrical and electronic equipment products will be CE marked as required by Directive 2011/65/EU. Components may not be CE marked. Additionally, the part numbers that TE has identified as EU ELV compliant have a maximum concentration of 0.1% by weight in homogenous materials for lead, hexavalent chromium, and mercury, and 0.01% for cadmium, or qualify for an exemption to these limits as defined in the Annexes of Directive 2000/53/EC (ELV). Regarding the REACH Regulation, the information TE provides on SVHC in articles for this part number is based on the latest European Chemicals Agency (ECHA) 'Guidance on requirements for substances in articles' posted at this URL: <https://echa.europa.eu/guidance-documents/guidance-on-reach>

Compatible Parts



TE Part # 2291283-1
0.5MM FPH BTB, 4H/30POS/15U/TR /WB/B



TE Part # 2291283-2
0.5MM FPH BTB, 4H/30POS/15U/TR /WOB/B

Customers Also Bought



TE Part #5745968-7
25 PLUG SP/FMS INSRT



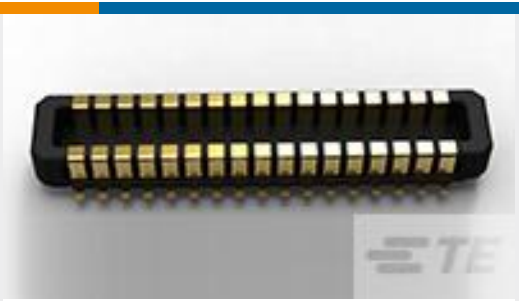
TE Part #1717254-4
EMBOSS ASSY DDR2 SODIMM SOCKET 200P 5.2H



TE Part #5745967-7
25 RCPT SP/FMS INSRT



TE Part #1-2308273-2
QL-SET VARA W/STP MO FOR COMBLOCK 440UNC



TE Part #1-2201196-0
0.4 STACKING CONN H0.98 PLUG ASSEMBLY



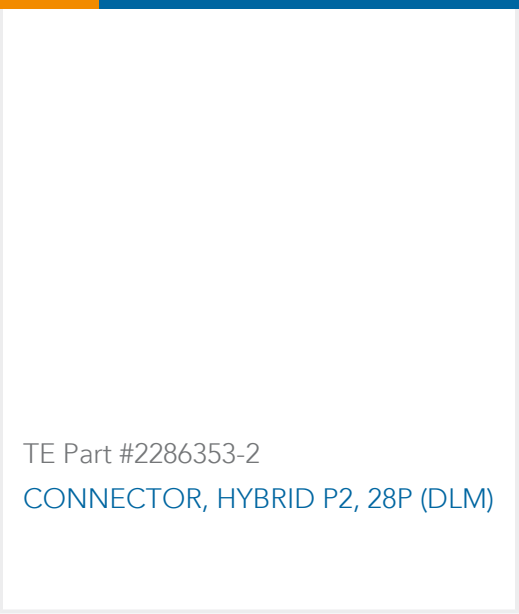
TE Part #2199070-4
0.5MM FPH BTB, 4H/24POS/15U/TR /WOB



TE Part #2-1393779-6
V23101D 103A201



TE Part #4-1423673-1
W51-A152A1-15=CKTBKR,THERM, ROC



TE Part #2286353-2
CONNECTOR, HYBRID P2, 28P (DLM)

Documents

Product Drawings

0.5MM FPH BTB, 4H/30POS/15U/TR/WB/B

English

CAD Files

3D PDF

3D

Customer View Model

ENG_CVM_CVM_2291283-1_A.2d_dxf.zip

English

Customer View Model

ENG_CVM_CVM_2291283-1_A.3d_igs.zip

English

Customer View Model

ENG_CVM_CVM_2291283-1_A.3d_stp.zip

English

By downloading the CAD file I accept and agree to the [Terms and Conditions](#) of use.

Datasheets & Catalog Pages

1-1773721-3_0.5mm_FinePitch_Hermahroditic_BtB_Connector_flyer

English

Product Specifications

Application Specification

English