

Adapter Connector BNC Male to Binding Post, Double Black

**RoHS
Compliant**

Stock No.: L015CT2410

FEATURES

- BNC Male to Binding Post, Double
- Nickel-plated



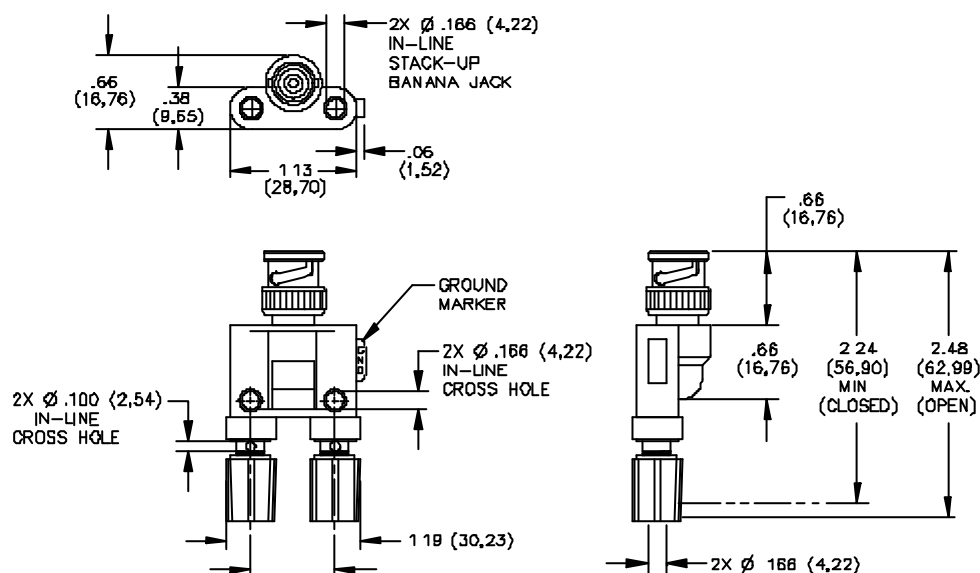
Product Description

Adapts a BNC cable, component, or equipment to binding posts. Connections can be made to the binding posts by spade lugs, banana plugs or wire leads. 0.75" (19 mm) binding post spacing.

General Specifications

Attribute	Value
Adapter Type A	Binding Post
Adapter Type B	BNC
Gender A	N/A
Gender B	Male
Impedance	50Ω
Body Orientation	Straight
Polarity	Normal
Contact Plating	Nickel
Body Plating	Nickel
Contact Material	Brass

Product Drawing



FEATURES:

- Converts BNC based test instruments to double binding posts with banana jacks.
- Binding Posts can be vertically and horizontally stacked for test versatility.
- Wires, spade lugs, pin tip plugs and banana plugs can be attached by means of the insulated knurled thumb knob.
- Insulated thumb knob is captive to prevent misplacement.
- BNC features Nickel Plated, Beryllium Copper for tarnish resistance & long insertion life.
- BNC center contact is Gold Plated, Brass for low contact resistance
- BNC shell is plated for tarnish resistance.

Center Contact: Brass, Gold Plated

Impedance: 50 Ohms

Insulation: ABS Molded to BNC (Male) and Binding Post Bodies,

Color: Black

Binding Post: Body – Brass, Nickel Plated

Insulated Thumb Knob – Polycarbonate, Color: One Black, One Red

RATINGS:

Voltage: Hand-held testing: 30VAC/60VDC Max. Hands free testing in controlled

voltage environments: 500 VRMS Max.

Operating Temperature: +50°C (+122°F) Max

MATERIALS:

BNC (Male): Body: Brass, Nickel Plated Dielectric:

PTFE

Dimensions: Millimeters (Inches)

Part Number Table

Part Number	Description
L015CT2410	Adapter Connector BNC Male to Binding Post, Double Black

Important Notice: This data sheet and its contents (the "Information") belong to the members of the EASE group of companies (the "Group") or are licensed to it. No license is granted for the use of it other than for information purposes in connection with the products to which it relates. No license of any intellectual property rights is granted. The Information is subject to change without notice and replaces all data sheets previously supplied. The Information supplied is believed to be accurate, but the Group assumes no responsibility for its accuracy or completeness, any error in or omission from it or for any use made of it. Users of this data sheet should check for themselves the Information and the suitability of the products for their purpose and not make any assumptions based on information included or omitted. Liability for loss or damage resulting from any reliance on the Information or use of it (including liability resulting from negligence or where the Group was aware of the possibility of such loss or damage arising) is excluded. This will not operate to limit or restrict the Group's liability for death or personal injury resulting from its negligence. EASE is the registered trademark of Ease Electronics Co., Limited 2019.