

## Adapter Connector BNC Female to Binding Post, Double Black

**RoHS  
Compliant**

Stock No.: L025CT2941

### FEATURES

- BNC Female to Binding Post, Double
- Nickel-plated



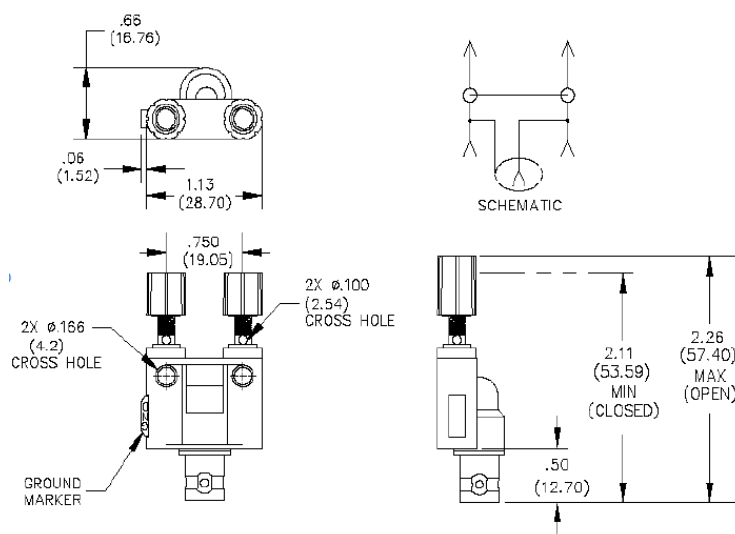
### Product Description

Adapts a BNC cable, component, or equipment to binding posts. Connections can be made to the binding posts by spade lugs, banana plugs or wire leads. 0.75" (19 mm) binding post spacing.

### General Specifications

Attribute	Value
Adapter Type A	Binding Post
Adapter Type B	BNC
Gender A	N/A
Gender B	Female
Impedance	50Ω
Body Orientation	Straight
Polarity	Normal
Contact Plating	Nickel
Body Plating	Nickel
Contact Material	Brass

## Product Drawing



### Features

- Permits single or double banana plugs to be used with equipment having a BNC male.
- Cross holes .166 (4.2) dia. in body provide side stack up connections.

### Materials

Upper Connector: Binding Posts, Insulated.

Material: Binding Post body, brass H.H. per QQ-B-626, Alloy 360.

Finish: Nickel plated per QQ-N-290, class 2 (.0002 min.).

Insulation: Acrylonitrile-Butadiene-Styrene, molded to Binding Posts and BNC receptacle. Color: One Red and one Black (Gnd).

Operating Temperature: +115°C. (+239°F.) Max.

Lower Connector: BNC receptacle, comparable to UG 1094/U.

Finish: Body and fittings, tarnish resistant Nominal Impedance: 50 Ohms

### Specifications

Operating Temperature: +50°C. (+122°F.) Max.

Operating Voltage:

Hand-held testing: 30 VAC/60 VDC Max.

Hands free testing in controlled voltage environments: 500 VRMS

Dimensions: Millimeters (Inches)

## Part Number Table

Part Number	Description
L025CT2941	Adapter Connector BNC Female to Binding Post, Double Black

Important Notice: This data sheet and its contents (the "Information") belong to the members of the EASE group of companies (the "Group") or are licensed to it. No license is granted for the use of it other than for information purposes in connection with the products to which it relates. No license of any intellectual property rights is granted. The Information is subject to change without notice and replaces all data sheets previously supplied. The Information supplied is believed to be accurate, but the Group assumes no responsibility for its accuracy or completeness, any error in or omission from it or for any use made of it. Users of this data sheet should check for themselves the Information and the suitability of the products for their purpose and not make any assumptions based on information included or omitted. Liability for loss or damage resulting from any reliance on the Information or use of it (including liability resulting from negligence or where the Group was aware of the possibility of such loss or damage arising) is excluded. This will not operate to limit or restrict the Group's liability for death or personal injury resulting from its negligence. EASE is the registered trademark of Ease Electronics Co., Limited 2019.