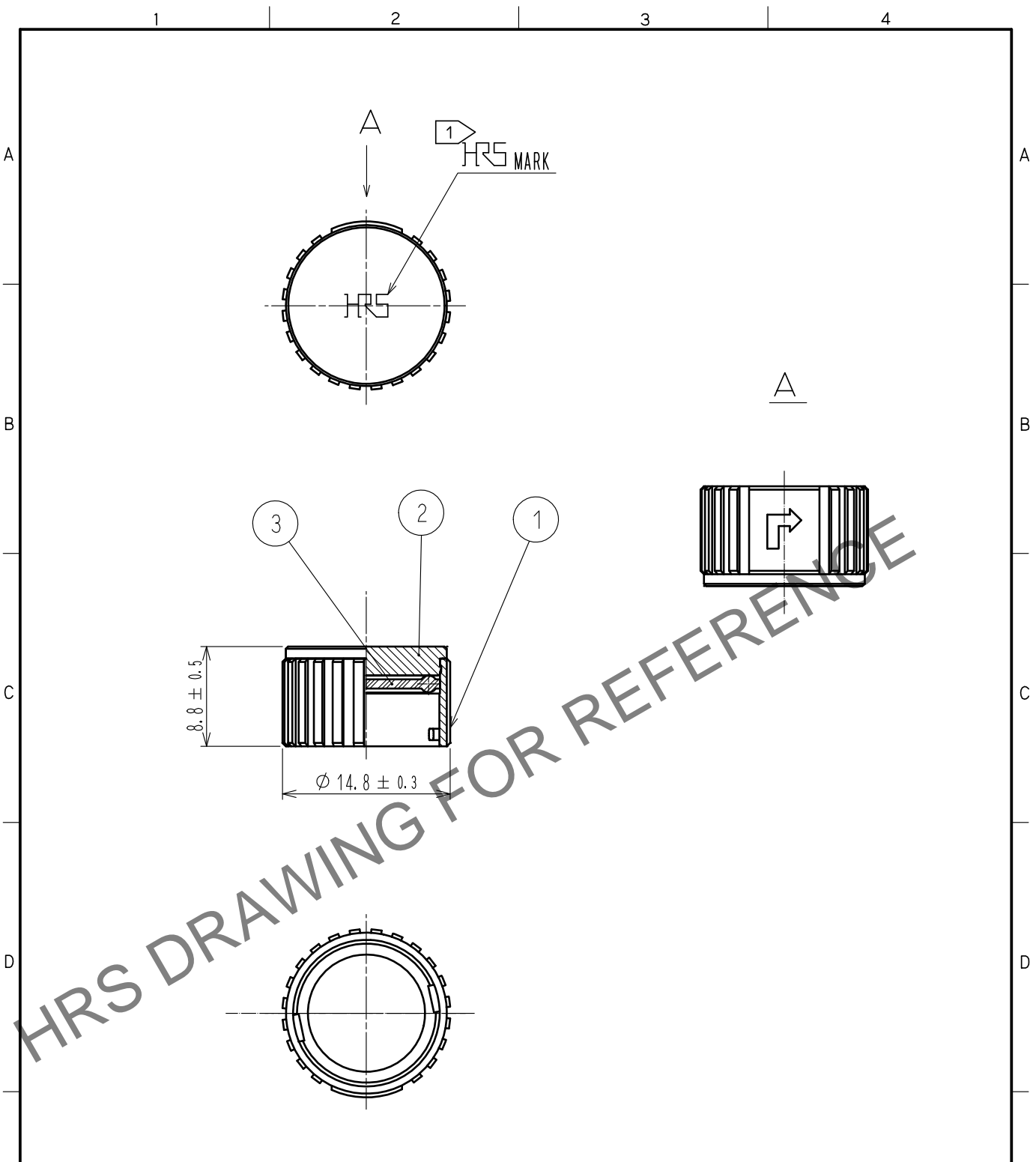


Jun.1.2024 Copyright 2024 HIROSE ELECTRIC CO., LTD. All Rights Reserved.  
In case of consideration for using Automotive equipment / device which demand high reliability, kindly contact our sales window correspondents.



HRS DRAWING FOR REFERENCE

NOTES  
1 ROTATION EXAMPLES OF HRS MARK ARE SHOWN.  
2 THIS PRODUCT IS A CAP FOR LF10WBR※-※(※).  
IT IS APPLICABLE REGARDLESS OF GIVEN ALPHABETS OR NUMBERS SHOWN AT ※.

2	BRASS	NICKEL PLATING					
1	ZINC ALLOY	NICKEL PLATING	3	ACRYLONITRILE BUTADIENE RUBBER	(GRAY)		
NO.	MATERIAL	FINISH .	REMARKS	NO.	MATERIAL	FINISH .	REMARKS
UNITS mm		SCALE 2 : 1	COUNT 	DESCRIPTION OF REVISIONS		DESIGNED	CHECKED
HIROSE ELECTRIC CO., LTD.		APPROVED	HY. KOBAYASHI	18.02.22	DRAWING NO.	EDC-115795-31-00	
		CHECKED	HY. KOBAYASHI	18.02.22	PART NO.	LF10WBR-C(31)	
		DESIGNED	TY. SUZUKI	18.02.22	CODE NO.	CL136-3001-8-31	
		DRAWN	HM. SAITO	18.02.20			
FORM HC0011-5-51		2	3	4	1/1		