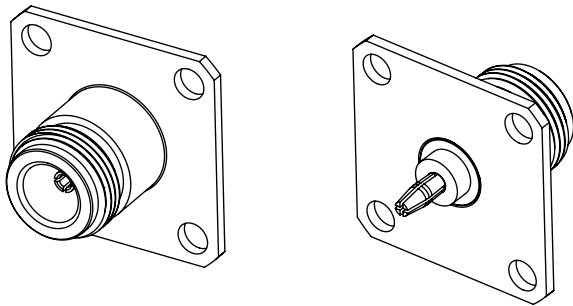
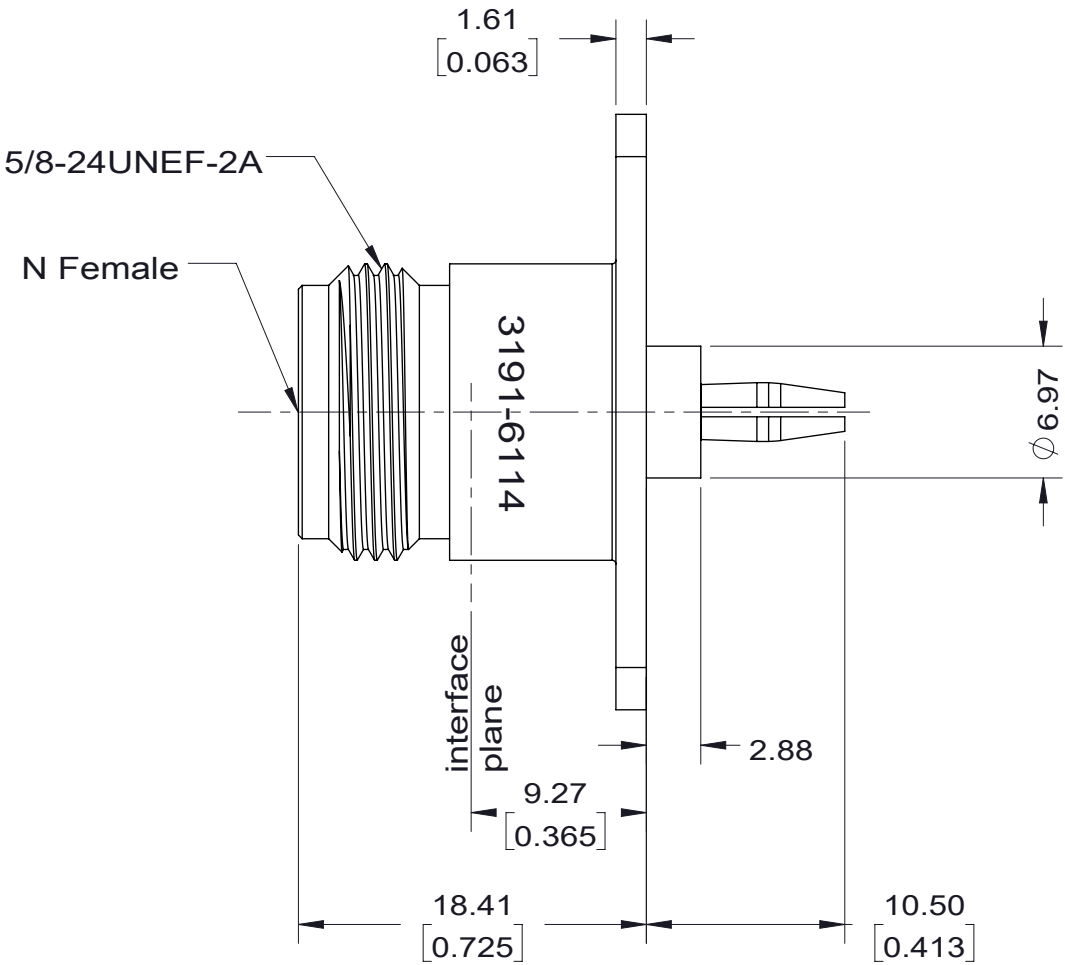
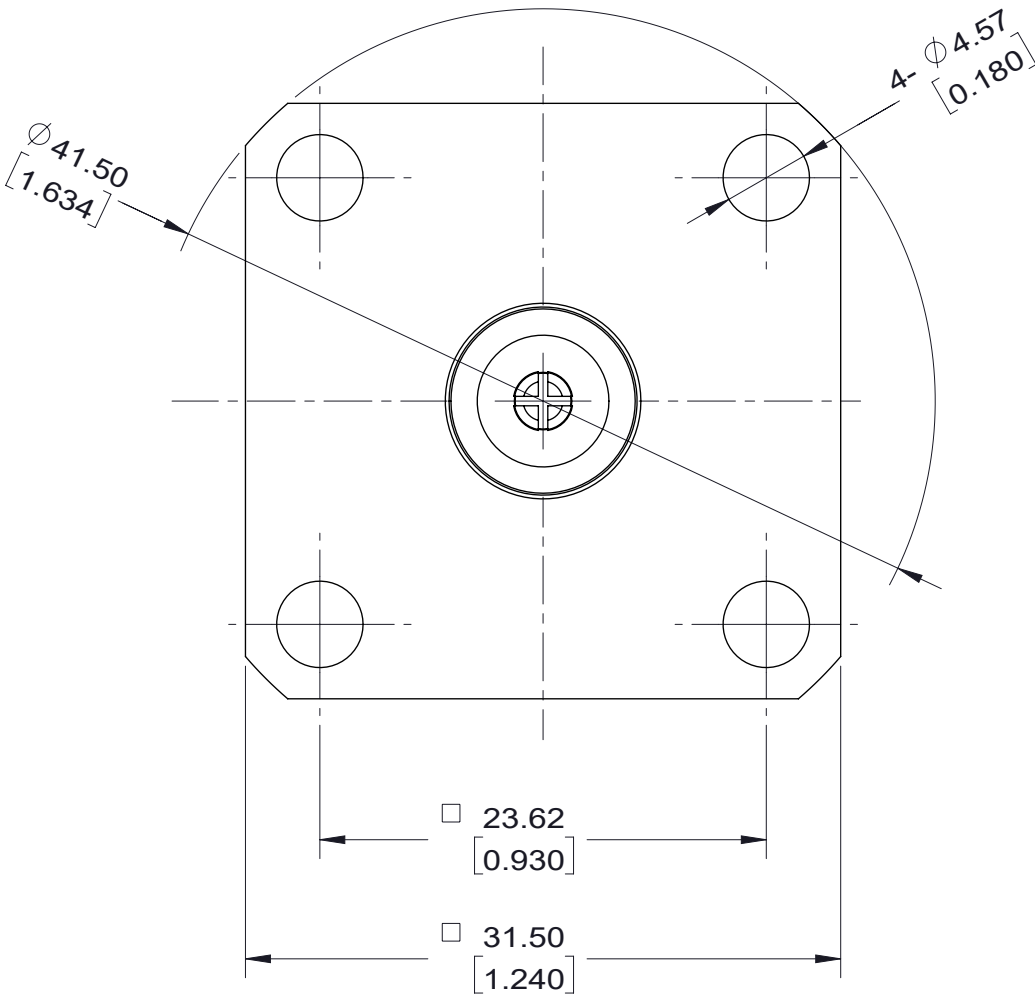


**NOTICE OF PROPRIETARY RIGHTS.** THIS DOCUMENT CONTAINS CONFIDENTIAL DATA, INCLUDING TRADE SECRETS, PROPRIETARY TO TIMES MICROWAVE SYSTEMS. DISCLOSURE OF THIS DATA IS EXPRESSLY CONDITIONED UPON YOUR ASSENT THAT ITS USE IS LIMITED TO USE WITHIN YOUR COMPANY ONLY. ANY OTHER USE IS STRICTLY PROHIBITED WITHOUT THE PRIOR WRITTEN CONSENT OF TIMES MICROWAVE SYSTEMS.

VER	Description	ECN	Name	Date
A	Release for production	N/A	Joslen	2019/07/02
B	Update Drawing	N/A	Joslen	2019/07/15



#### I. MATERIALS & FINISHES

Components	Materials	Finishes	Thickness Micron (Microinch)
Body	Brass	Albaloy	2.54(100)
Ring	Brass	Albaloy	2.54(100)
Center Cont.	Beryllium Copper	Gold	1.27(50)
Insulator	PTFE	Nature	--

#### III. ENVIRONMENT PROPERTIES

Temperature Range:	-40°c - +165°c
Thermal Shock:	MIL-STD 202G, Meth.107, Cond.B
Vibration:	MIL-STD 202G, Meth.204, Cond.B
Shock:	MIL-STD 202G, Meth.213, Cond I
Climatic Class:	IEC 60068 55/125/56
RoHS:	Compliant




#### II. ELECTRICAL PROPERTIES

Impedance ( $\Omega$ ):	50
Frequency Range (GHz):	DC to 2.5 GHz
Voltage Rating:	$\leq 1500$ V rms
Dielectric Withstanding Voltage:	$\geq 2700$ V rms
Insulation Resistance ( $M\Omega$ ):	$\geq 5000$
VSWR:	$\leq 1.20$
Insertion Loss(dB, f/GHz):	-0.1x $\sqrt{f}$

#### IV. MECHANICAL PROPERTIES

Durability (cycles):	500
----------------------	-----

Compatible With Standard: IEC61169-16

UNLESS OTHERWISE SPECIFIED				DFTM Joslen		<div><b>TIMES</b>MICROWAVE SYSTEMS An Amphenol Company</div> <div><b>AD-NF-QCM-PM-2.5</b></div> <div>N Female to QC Male Straight Adapter</div>				
ALL DIMENSIONS ARE IN mm MACHINED SURFACES FINISH 1.6 RMS MAX. REMOVE ALL BURRS 0.15X45° MAX. BREAK MACHINE CORNERS 0.15X45° D MAX. FILLET R. TOLERANCES ON DECIMALS .X ±0.15 .XX ±0.1 ANGLES ±2° FRACTIONS ± N/A  				DATE 2019/7/2						
				CHKD Patrick						
				DATE 2019/7/2						
				APPD Monica						
Scale: 2.5:1	Size: A3	CODE IDENT	68999	DATE 2019/7/2	SHT		2/2	3191-6114	REV	B