
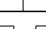
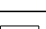
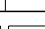
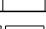
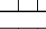









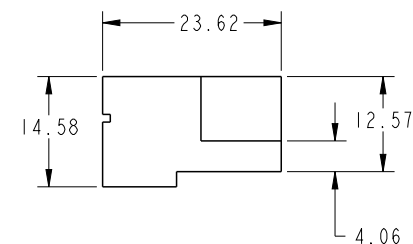
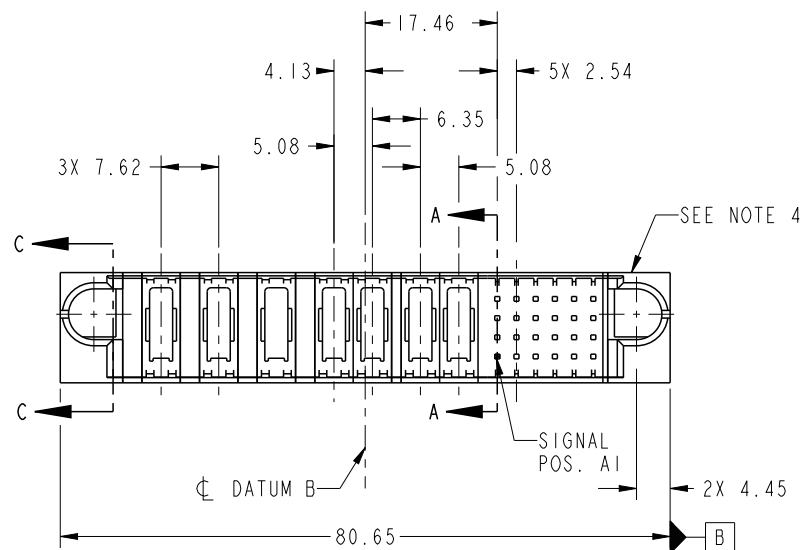
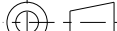


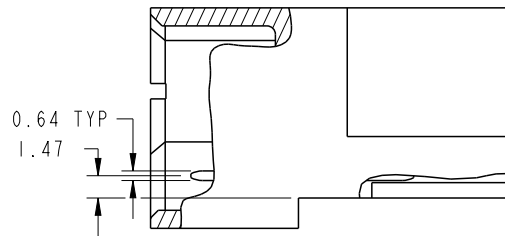


PRODUCT NO.	ROW S	POWER										SIGNAL						E2
		E1	P1	P2	P3	P4	P5	P6	P7	1	2	3	4	5	6			
51939-595_ _ NOTE 3	D C B A																	

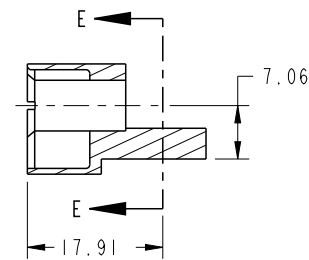


spec ref		SEE NOTE		dr	Anson Liu	2011/05/04	projection 	MM 	size	A4	scale	1:1
tolerance std see notes	TOLERANCES UNLESS OTHERWISE SPECIFIED			eng	Anson Liu	2011/06/21			ecn no	-		
				chr	-	-						
				appr	Pei-Ming Zheng	2011/06/22	product family		PwrBlade		rel level Released	
surface ✓	linear	0.X	±0.50		title	3ACP + 4P + 24S RIGHT ANGLE SOLDER HEADER			dwg no	51939-595		rev A
		0.XX	±0.25									
		0.XXX	±0.10									
		angular	0°	±2°	www.fci.com	cat. no.	Product - Customer Drw				sheet 1 of 4	

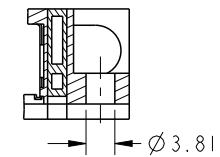
Print File - REV C - 2009-06-09



BROKEN-OUT SECTION A-A
SCALE 2:1



SECTION C-C



PARTIAL SECTION E-E

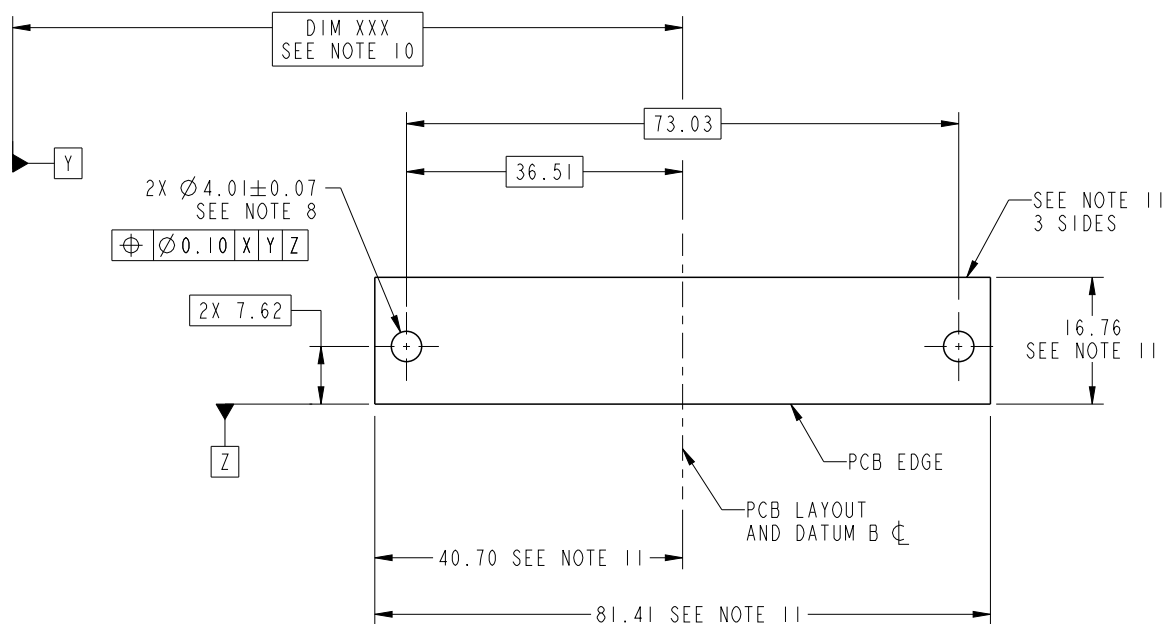
spec ref	SEE NOTE			dr	Anson Liu	2011/05/04	<div>projection</div> <div></div>	<div>MM</div> <div></div>	size	A4	scale	1:1	
tolerance std See notes	TOLERANCES UNLESS OTHERWISE SPECIFIED			eng	Anson Liu	2011/06/21			ecn no				-
				chr	-	-							
				appr	Pei-Ming Zheng	2011/06/22			product family		PwrBlade	rel level	
surface	linear	0.X	±0.50		title 3ACP + 4P + 24S RIGHT ANGLE SOLDER HEADER			dwg no	51939-595		rev A		
		0.XX	±0.25										
		0.XXX	±0.10										
	angular	0°	±2°	www.fci.com	cat. no.		Product - Customer Drw			sheet 2 of 4			

PrntE File - REV C - 2009-06-09

PDS: Rev :A

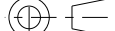


STATUS:Released

Printed: Jul 07, 2011



RECOMMENDED PCB LAYOUT

Copyright FCI.

spec ref		SEE NOTE		dr	Anson Liu	2011/05/04	projection 	MM 	size	A4	scale	1:1
tolerance std See notes	TOLERANCES UNLESS OTHERWISE SPECIFIED			eng	Anson Liu	2011/06/21			ecn no	-		
				chr	-	-			product family	PwrBlade		rel level
surface ✓	linear	0.X	±0.50		title	3ACP + 4P + 24S RIGHT ANGLE SOLDER HEADER		dwg no	51939-595		rev	A
		0.XX	±0.25									
		0.XXX	±0.10									
	angular	0°	±2°	www.fci.com	cat. no.	Product - Customer Drw				sheet 3 of 4		

NOTES:

1. DIMENSIONS AND TOLERANCES ARE IN ACCORDANCE WITH
ASME Y14.5M, 1994 UNLESS OTHERWISE SPECIFIED.

CONNECTOR NOTES:

2. HOUSING MATERIAL: UL 94 V-0 GLASS FILLED HIGH-TEMP THERMOPLASTIC
POWER CONTACT MATERIAL: COPPER ALLOY
SIGNAL PIN MATERIAL: COPPER ALLOY

3. SEE ITEM 1 & 2 IN PRINT 10064183 FOR PLATING SPEC OF 51939-595 AND 51939-595LF RESPECTIVELY.

4. MANUFACTURER'S NAME, DATE CODE AND OPTIONAL P/N TO APPEAR ON
THIS SURFACE. THE P/N CAN BE OMITTED IF THERE IS NOT ENOUGH
SPACE ON THIS SURFACE.

5. PRODUCT SPECIFICATION GS-12-149.
APPLICATION SPECIFICATION BUS-20-067.

6. PACKAGED IN TRAYS.

PCB NOTES:

7. ALL HOLE DIAMETERS ARE FINISHED HOLE SIZE.

8. MOUNTING HOLES, WHERE APPLICABLE, ARE UNPLATED.

9. $\varnothing 1.151 \pm 0.025$ DRILLED HOLES PLATED WITH
0.008 MIN SnPb OR Sn OVER 0.03
TO 0.08 Cu PLATING TO ACHIEVE
 $\varnothing 1.02 \pm 0.07$ HOLE.

10. "DIM XXX" TO BE DETERMINED BY THE CUSTOMER.

11. CONNECTOR KEEP-OUT ZONE.

spec ref		SEE NOTE			dr		Anson Liu	2011/05/04	projection 	MM 	size	A4	scale	1:1
tolerance std See notes	TOLERANCES UNLESS OTHERWISE SPECIFIED			eng		Anson Liu	2011/06/21	ecn no			-			
				chr		-	-							
					appr		Pei-Ming Zheng	2011/06/22	product family		PwrBlade	rel level		Released
surface 	linear	0.X	±0.50			title 3ACP + 4P + 24S RIGHT ANGLE SOLDER HEADER				dwg no	51939-595			rev A
		0.XX	±0.25											
		0.XXX	±0.10											
	angular	0°	±2°		www.fci.com		cat. no.		Product - Customer Drw			sheet 4 of 4		