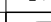
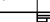
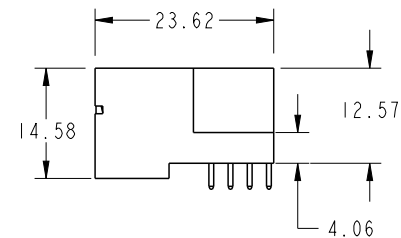
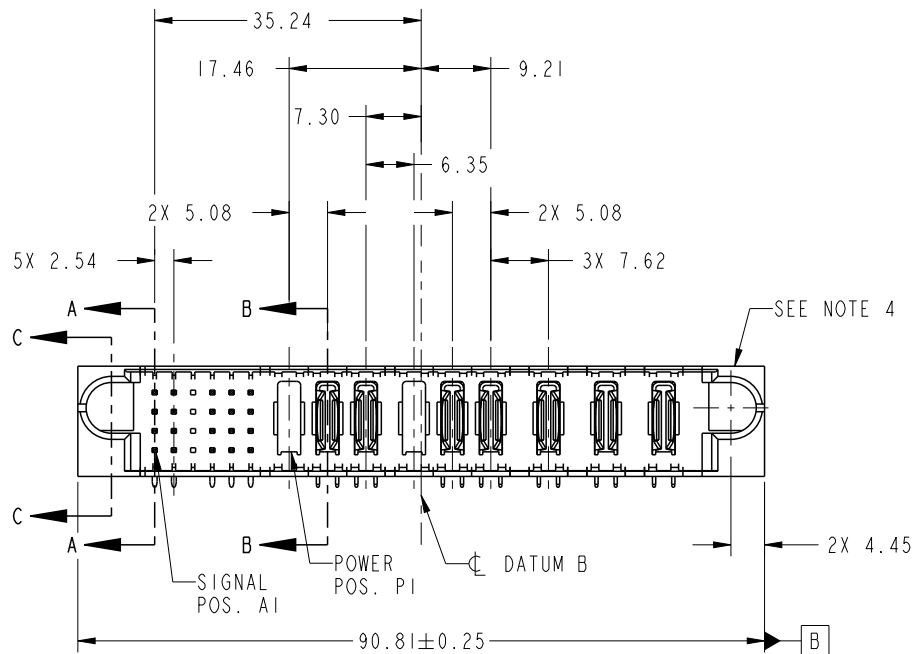




Copyright FCI.

PRODUCT NO.	ROWS		SIGNAL						POWER																
		E1	1	2	3	4	5	6	P1	P2	P3	P4	P5	P6	P7	P8	P9	E2							
51939-597_-- NOTE 3	D C B A		U	U	X	U	U	H	X	PA	PA	X	PA	PA	PA	PA	PA	PA							
		T	T	X	T	T																			
		R	R	X	R	R																			
			H	H	H	H	H		U			U	U	U	U	U	U	U							



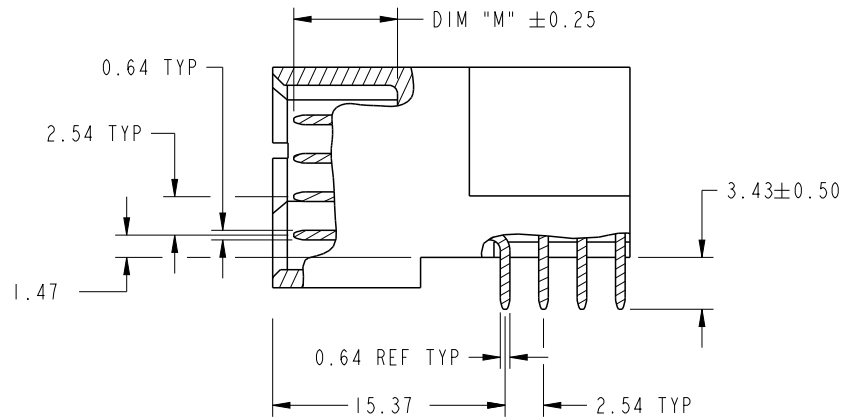
CODE	DIM "M" MATING LENGTH	CONTACT TYPE
U	[6.86]	SIGNAL
T	[6.86]	SIGNAL
S	[6.86]	SIGNAL
R	[6.86]	SIGNAL
PA	[N/A]	POWER
H	[5.59]	SIGNAL
X	OMITTED	OMITTED

spec ref		SEE NOTE			dr		X Q Wang		2011/06/08		projection				size		A4		scale		1:1		
tolerance std		TOLERANCES UNLESS OTHERWISE SPECIFIED			eng		X Q Wang		2011/06/14						ecn no		-						
SEE NOTE					chr		-		-														
					appr		Pei-Ming Zheng		2011/06/15						product family		PwrBlade		rel level		Released		
surface				linear		0.X		±0.5				title		24S + 9P		dwg no		51939-597		rev		A	
				0.XX		±0.25																	
				0.XXX		±0.1																	
		angular		0°		±2°		www.fci.com		cat. no.		-		Product - Customer Drw		sheet 1 of 4							

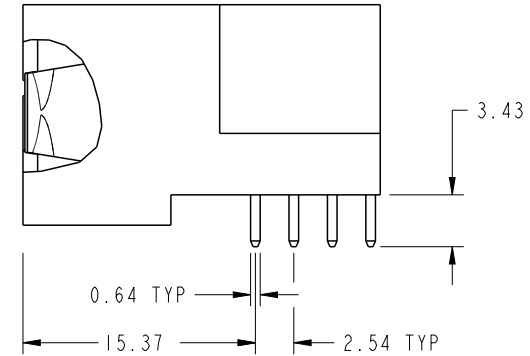
PrintE File - REV C - 2009-06-09

PRODUCT NUMBER

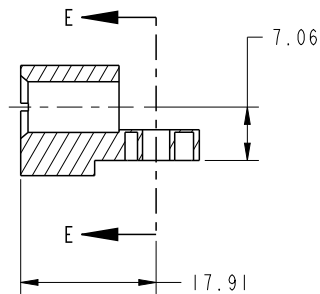
51939-597--
NOTE: 3



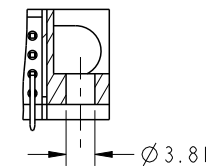
BROKEN-OUT SECTION A-A
SCALE 2:1




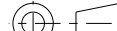



BROKEN-OUT SECTION B-B
SCALE 2:1



SECTION C-C



PARTIAL SECTION E-E

spec ref		SEE NOTE			dr		X Q Wang		2011/06/08		projection				size		A4		scale		1:1		
tolerance std		TOLERANCES UNLESS OTHERWISE SPECIFIED			eng		X Q Wang		2011/06/14						ecn no		-						
SEE NOTE					chr		-		-						product family		PwrBlade		rel level		Released		
					appr		Pei-Ming Zheng		2011/06/15														
surface				linear		0.X		±0.5				title		24S + 9P		dwg no		51939-597		rev		A	
				0.XX		±0.25																	
				0.XXX		±0.1																	
		angular		0°		±2°		www.fci.com		cat. no.		-		Product - Customer Drw		sheet 2 of 4							

PrintE File - REV C - 2009-06-09

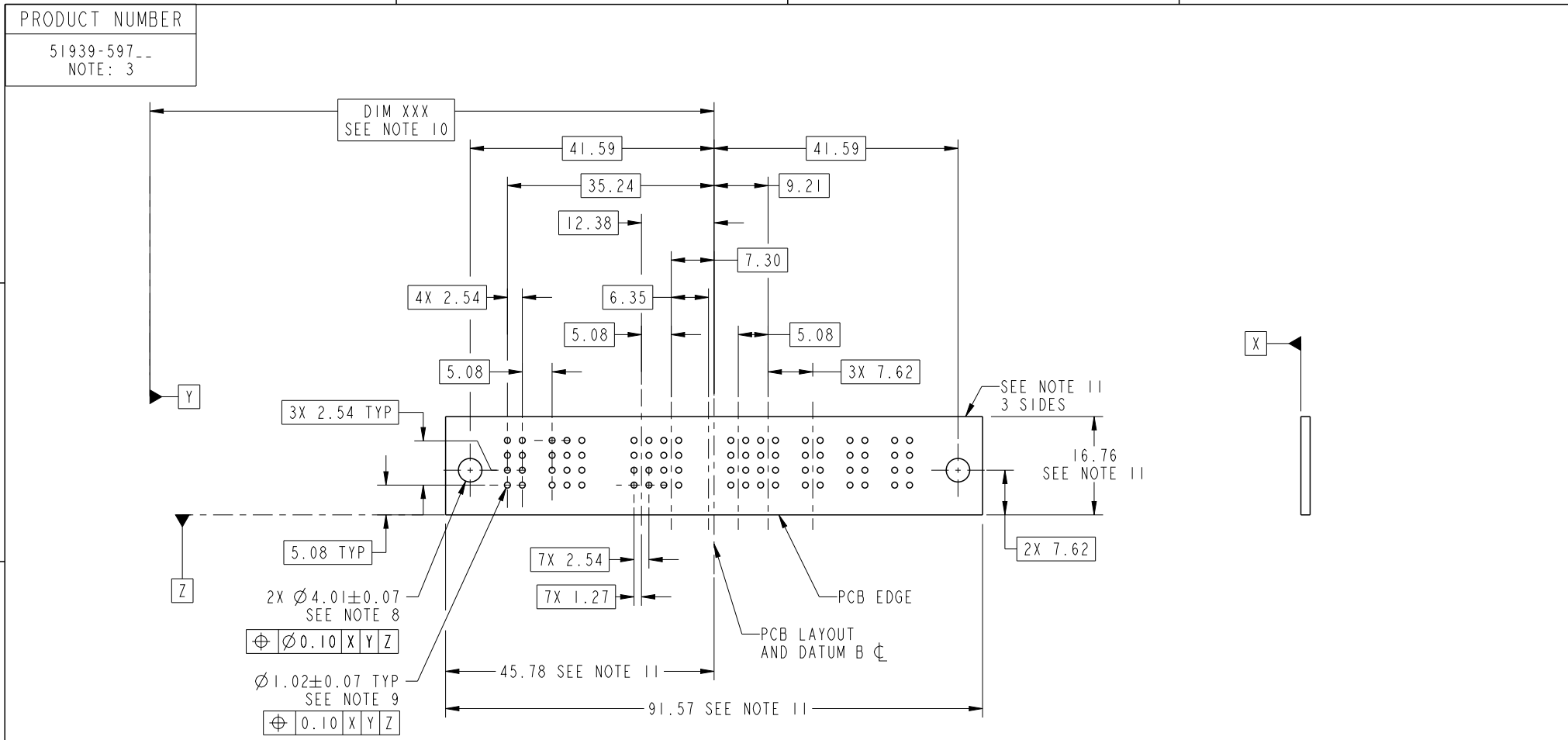
PDS: Rev :A

STATUS:Released

Printed: Jun 15, 2011



Copyright FCI.



RECOMMENDED PCB LAYOUT

spec ref		SEE NOTE		dr		X Q Wang		2011/06/08		projection		MM		size		A4		scale		1:1			
tolerance std		TOLERANCES UNLESS OTHERWISE SPECIFIED		eng		X Q Wang		2011/06/14						ecn no		-							
chr				-		-																	
appr				Pei-Ming Zheng		2011/06/15		product family						PwrBlade		rel level		Released					
surface				linear		0.X		±0.5				title		24S + 9P		dwg no		51939-597		rev		A	
0.XX						±0.25																	
0.XXX						±0.1																	
angular		0°		±2°		www.fci.com		cat. no.		-		Product - Customer Drw		sheet 3 of 4									



Copyright FCI.

PRODUCT NUMBER												
51939-597-- NOTE: 3												
NOTES:												
1. DIMENSIONS AND TOLERANCES ARE IN ACCORDANCE WITH ASME Y14.5M, 1994 UNLESS OTHERWISE SPECIFIED.												
CONNECTOR NOTES:												
2. HOUSING MATERIAL: UL 94 V-0 GLASS FILLED HIGH-TEMP THERMOPLASTIC POWER CONTACT MATERIAL: COPPER ALLOY SIGNAL PIN MATERIAL: COPPER ALLOY												
3. SEE ITEM 1 & 2 IN PRINT 10064183 FOR PLATING SPEC OF 51939-597 AND 51939-597LF RESPECTIVELY.												
4. MANUFACTURER'S NAME, DATE CODE AND OPTIONAL P/N TO APPEAR ON THIS SURFACE. THE P/N CAN BE OMITTED IF THERE IS NOT ENOUGH SPACE ON THIS SURFACE.												
5. PRODUCT SPECIFICATION GS-12-149. APPLICATION SPECIFICATION BUS-20-067.												
6. PACKAGED IN TRAYS.												
PCB NOTES:												
7. ALL HOLE DIAMETERS ARE FINISHED HOLE SIZE.												
8. MOUNTING HOLES, WHERE APPLICABLE, ARE UNPLATED.												
9. $\varnothing 1.151 \pm 0.025$ DRILLED HOLES PLATED WITH 0.008 MIN SnPb OR Sn OVER 0.03 TO 0.08 Cu PLATING TO ACHIEVE $\varnothing 1.02 \pm 0.07$ HOLE.												
10. "DIM XXX" TO BE DETERMINED BY THE CUSTOMER.												
11. CONNECTOR KEEP-OUT ZONE.												
spec ref		SEE NOTE		dr	X Q Wang	2011/06/08	projection 	MM 	size	A4	scale	1:1
tolerance std SEE NOTE	TOLERANCES UNLESS OTHERWISE SPECIFIED			eng	X Q Wang	2011/06/14			ecn no	-		
				chr	-	-						
				appr	Pei-Ming Zheng	2011/06/15	product family		PwrBlade		rel level	Released
surface	linear	0.X	± 0.5		title	24S + 9P RIGHT ANGLE SOLDER HEADER		dwg no	51939-597		rev	A
		0.XX	± 0.25									
		0.XXX	± 0.1									
angular	0°	$\pm 2^\circ$	www.fci.com	cat. no.		-	Product - Customer Drw		sheet 4 of 4			