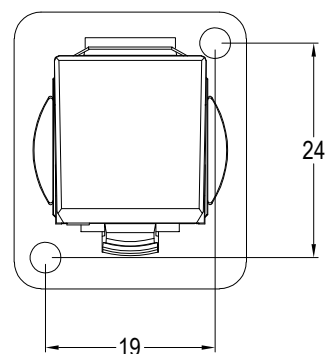
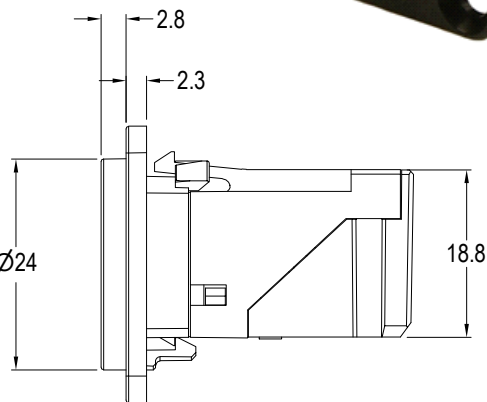
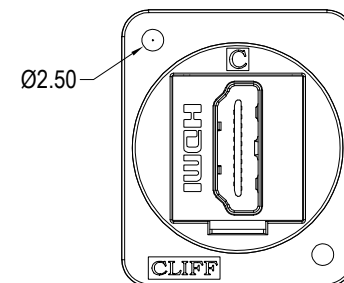
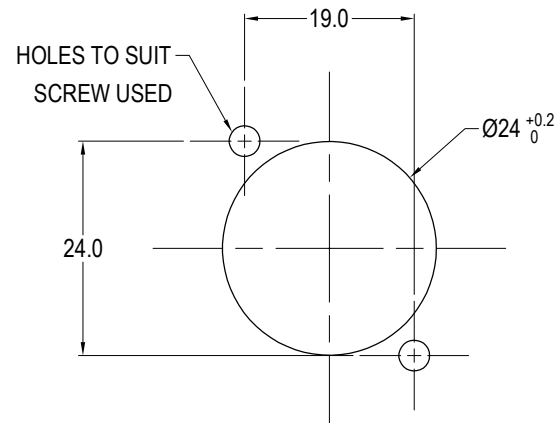


2x FIXING HOLE VARIANTS:  
Ø3.5mm CSK 82° x Ø5.85  
'X' VERSION HAS Ø2.5 PLAIN HOLES.



PANEL CUTOUT  
MAXIMUM PANEL  
THICKNESS 2mm



'X' VERSION  
Ø2.5 PLAIN HOLES

**RoHS**  
COMPLIANT

**TOLERANCE**  
NO DEC. PLACE ±  
1 DEC. PLACE ±  
2 DEC. PLACE ±  
HOLE Ø ±  
ANGLES ±  
UNLESS  
OTHERWISE STATED

DO NOT SCALE

ISS.	AMEND	DATE
1	ISSUED	15/07/22
2	MAX PANEL WAS 3mm	25/07/23

PART NO.	FIXING HOLE DETAILS
CP30253	HOLE Ø3.50 x CSK 82° x Ø5.85
CP30253X	PLAIN HOLE Ø2.50

## Material:

1. Insert: ABS UL94-V2
2. Frame: Polyamide UL94-V2
3. Shell: Gold plated
4. Contacts: Gold Plated

## HDMI Specification

1. Female - Female HDMI 2.0
2. Supports 4K 60Hz

## Cliff Electronic Components Ltd.

76 Holmethorpe Avenue, Holmethorpe Industrial Estate,  
Redhill, Surrey, RH1 2PF, England, UK  
Tel: 01737-771375 Fax: 01737-766012 Website: www.cliffuk.co.uk

THE CONTENTS OF THIS DOCUMENT MUST NOT BE COPIED OR DISCLOSED  
TO A 3rd PARTY WITHOUT WRITTEN PERMISSION OF CLIFF UK. © 2022

DIMENSIONS IN MILLIMETERS UNLESS OTHERWISE STATED. WORK TO DIMENSIONS. REMOVE ALL BURRS. IF IN DOUBT ASK.

MATERIAL: See Notes

FINISH: See Notes

DRAWN: T.J.O.

APPROVED: D.P.J.

3rd ANGLE PROJECTION:



TITLE: RAFT HDMI A-A FEMALE

DRWG. No. CP30253

FORM: A4DRWGH